

# TE DEUM

Fábio Soldá

Vivace (M.M. = 150)

Soprano/Alto

Tenor/Baixo

Cordas (alto)

Cordas (baixo)

Trompa em Fá

Trompete

Tímpanos

Oboe d'Amore

S/A

T/B

CA

CB

Tp.

Tpt

Timp.

Ob. dam.

*fff*

## TE DEUM

**TE DEUM**

*f*

*Te*

*fff*

De - um lau - da - mus

24

S/A

T/B

CA

CB

Tp.

Tpt.

Timp.

Ob. dam.

29

Allegro (M. M. = 120)

S/A

T/B

CA

CB

Tp.

Tpt.

Timp.

Ob. dam.

mur.

Te æ - ter - num Pa - trem om - nes - om - nes ter - ra

## 4

4  
35

S/A

ve - ne - ra - tur Ti - bi om - nes an - ge - li ti - bi cæ - li et u - ni -

T/B

CA

CB

35

Tp.

35

Tpt

35

Timp.

35

Ob. dam.

41

S/A

ver - sæ po - tes - ta - tes Ti - - - bi - che - ru - bim

T/B

CA

CB

41

Tp.

41

Tpt

41

Timp.

41

Ob. dam.

TE DEUM

5

et se-ra-phim in-ces-sa-bi-li in-ces-sa-bi-li vo-cem proc-la-mant: Sanc-tus

## 6.

Ob. dam.

## 7

[illegible]

73

CA

CB

78

S/A

ve - rum et u - ni - cum Fil - li - um

Sanc - tum quo - que Pa - ra - cle - tum Spi - ri - tum

Tu Rex Glo - ri - æ

T/B

78

CA

CB

78

Tp.

78

Tpt

78

Timp.

78

Ob. dam.

Detailed description: This page contains the musical score for the 'TE DEUM' section, starting at measure 73. The score is arranged for a choir and a symphony orchestra. The vocal parts include Contraltos (CA), Contrabasses (CB), Soprano/Alto (S/A), and Tenor/Bass (T/B). The instrumental parts include Contraltos (CA), Contrabasses (CB), Trumpets (Tp.), Trumpets (Tpt.), Timpani (Timp.), and Oboe d'amore (Ob. dam.). The vocal parts have lyrics in Latin. The instrumental parts are mostly rests, indicating they are silent during this section. The score is written in G major and 4/4 time. The vocal parts are in a homophonic setting, with the Soprano/Alto and Tenor/Bass parts having the lyrics. The instrumental parts are in a homophonic setting, with the Contraltos and Contrabasses providing the harmonic support. The score is written in a standard musical notation with a key signature of one sharp (F#) and a common time signature (C).



84

S/A

Chris - ti Tu Pa - tris Sem - pi - ter - nus es fi - li - us

T/B

CA

CB

84

84

84

84

84

84

84

84

84

89

S/A

Tu ad li - be - ran - dum sus - cep - tu - rus ho - mi - nem

T/B

CA

CB

89

89

89

89

89

89

89

89

TE DEUM

10

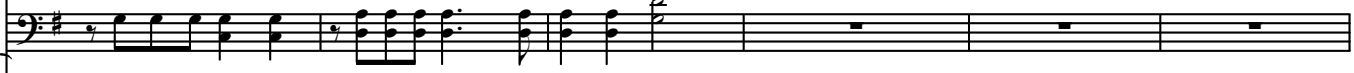
94

S/A



non hor - ru - is - ti vir - gi - nis u - - - te - rum

T/B



CA

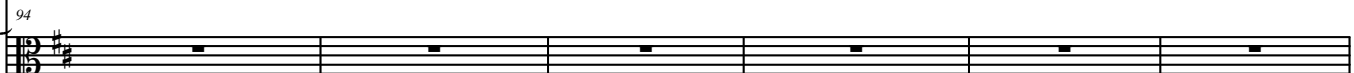


CB



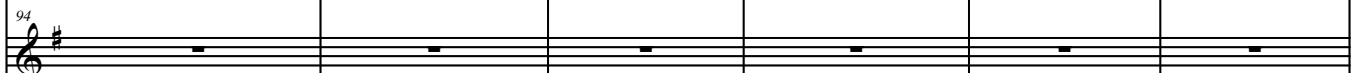
94

Tp.



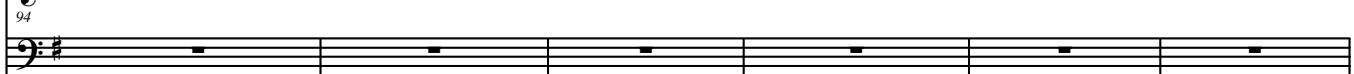
94

Tpt



94

Timp.



94

Ob. dam.



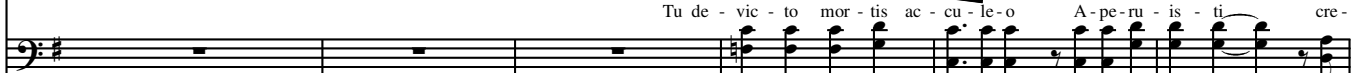
100

S/A



Tu de - vic - to mor - tis ac - cu - le - o A - pe - ru - is - ti cre -

T/B



100

CA

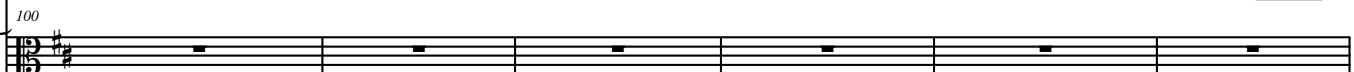


CB



100

Tp.



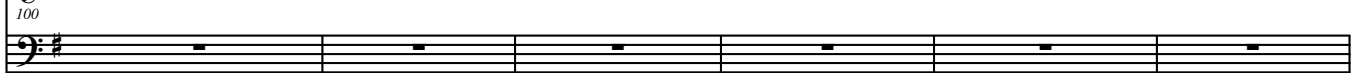
100

Tpt



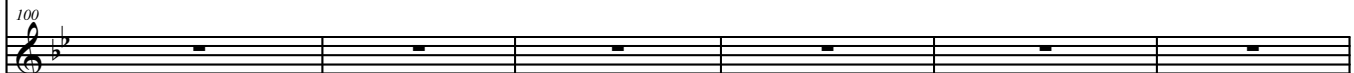
100

Timp.



100

Ob. dam.



den - ti - bus re - g - na - cæ - lo - - - rum Tu sedes ad dex - te - ram De - i se - des in Glo - ria De - i Pa - tris

Ju - dex cre - de - re es - se ven - tu - rus.

12  
117

TE DEUM

Andantino (M. M. = 80) *mp*

S/A

T/B

CA

CB

117

*mp*

117

*mp*

117

*mp*

117

*mp*

Ob. dam.

126

Vivace (M.M. = 150)

S/A

T/B

CA

CB

126

*f*

126

*f*

126

*f*

126

*f*

Ob. dam.

o - so san - gui - ne re - di - mis - ti

Te er - go quæ - su - mus Tu - is fa - mu - lis sub - ve - ni Quos pre - ti -

134 *ff*

S/A *Æ - ter - na fac cum sanc - tis tu - is in glo - ri - a nu - me - ra - - - ri*

T/B

CA

CB

134

134 *ff*

134 *fff*

134

134

142

S/A *Sal - vum fac po - pu - lum tu - um, - Do - mi - ne et be - ne - dic he - re - dia - ti tu - æ!*

T/B

CA

CB

142

142 *ff*

142 *fff*

142 *ff*

## TE DEUM

14  
150

S/A Et re - ge e - os ex - tol - le il - los us - que in æ - ter - num Per sin - gu - los

T/B

CA

CB

150

150

150

150

150

150

150

158

S/A di - es be - ne - di - ci - mus te et lau - da - mus no - mem - tu - um in sæ - cu - lum et in sæ - cu -

T/B

CA

CB

158

158

158

158

158

158

158

LE DEUM 15

165

S/A lum sæ - cu - li Dig - na - - - re, Do - mi - ne, di - e

T/B

CA

CB

165

Tp.

165

Tpt.

165

Timp.

165

Ob. dam.

171

S/A is - to Mi - se - re - re nos - tri, Do - mi -

T/B oth Si - ne pec - ca - ta nos cus - to - di - - - - -

CA

CB

171

Tp.

171

Tpt.

171

Timp.

171

Ob. dam.

## 16

180

188

**P**

188



[illegible]

TE DEUM

18 214

*ff*

S/A In te, Do - mi - ne spe - ra - vi non con fun - dar, non con - fun - dar in æ - ter - no, in æ - ter - no, non non con -

T/B

CA

CB

214

Tp.

214

Tpt

214

Timp.

214

Ob. dam.

221

S/A fun - dar, non, non con - fun - dar, non, non con - fun - dar in æ - ter - - - no! Non con -

T/B

CA

CB

221

Tp.

221

*f*

Tpt

221

3 3

Timp.

221

Ob. dam.

226

S/A

fun - dar, non con fun - dar in æ - ter - no in æ - - ter - no, in æ - - - - ter -

T/B

226

CA

CB

226

226

3

226

226

Ob. dam.